

Welcome to Nurturing Connections Training For Foster And Adoptive Parents



Agenda

- ▶ Review of Themes
- ▶ Transition Planning
- ▶ New Registration
- ▶ Video Clip Demo

What is Changing

Replaces
current
curricula:

- Foster Parent Foundation
- Fostering to Forever
- Building Forever Families, Days 1, 2, and 3

Used for:

- Level 2 foster parents- initial licensing training
- Levels 3 and 4 foster parents- a portion of pre-placement training
- All pre-adoptive families- conversion and waiting families

Developed using the National Training and Development Curriculum (NTDC)

- ▶ A collaborative research-based curriculum led by Spaulding for Children.
- ▶ Funded by DHHS, Administration for Children and Families, Children's Bureau
- ▶ Developed with input from those with lived experience in foster care, including former foster and adoptive youth and resource caregivers.
- ▶ Incorporates adult learning principles- podcasts, videos, experiential activities which allows parents to practice and develop essential skills
- ▶ Piloted for 5 years in 8 sites
- ▶ Extensively and rigorously evaluated with encouraging results.
- ▶ Designed to be flexible and is easily adapted to meet Wisconsin's needs

Nurturing Connections: Training for Foster and Adoptive Parents



Themes vs Modules



Mix of instructor led and on demand (Right Time Training) themes



No class is over 2 hours



Some choice in which classes to take



Spanish language offerings

NURTURING CONNECTIONS



Foster Care Only

Parenting in Racially & Culturally Diverse Families
1.5 hours

Reunification as the Primary Permanency Goal
1.5 hours

6.5 Hours

Right Time/On Demand Training

Supporting American Indian Children-Honoring the Past, Empowering the Future
1 hour

Maintaining Children's Connections
1 hour

Foster Care: A Means to Support Families
1.5 hours

Accessing Services and Supports
1 hour

Cultural Humility
1 hour

Attachment
2 hours

Sexual Development and Identity
1 hour

Foster Care and Adoption

Separation, Grief, and Loss
2 hours

13 Hours

Trauma Informed Parenting
2 hours

Child Development
1 hour

Welcome and Orientation to Nurturing Connections

Parenting a Child with a History of Sexual Trauma
1 hour

Trauma Related Behaviors
2 hours

Adoption Only

Answering Legal Questions about Public Adoption
0.5 hours

Family Dynamics
1 hour

Common Feelings Associated with Being Adopted
1 hour

Education
1 hour

The Impact of Congregate Care Settings
0.5 hour

Life Story: Birth and Adoption Story
1 hour

Connection with Birth Families after Adoption
1 hour

6 Hours

Elective Menu Options

Kinship Parenting (RELATIVE CAREGIVERS)
2 hours

Building Parental Resilience for Kinship Caregivers (RELATIVE CAREGIVERS)
1.5 hours

Effective Communication
1 hour

Creating a Stable, Nurturing, & Safe Environment
2 hours

Mental Health Considerations
1 hour

Impact of Substance Use
1.5 hours

Parenting in Racially and Culturally Diverse Families
1.5 hours

Sensory Integration
1 hour

Building Children's Resilience
1 hour

Education
1 hour

Managing Placement Transitions
1 hour

Building Parental Resilience
1 hour

Preparing for Adulthood
1 hour

Family Dynamics
1 hour

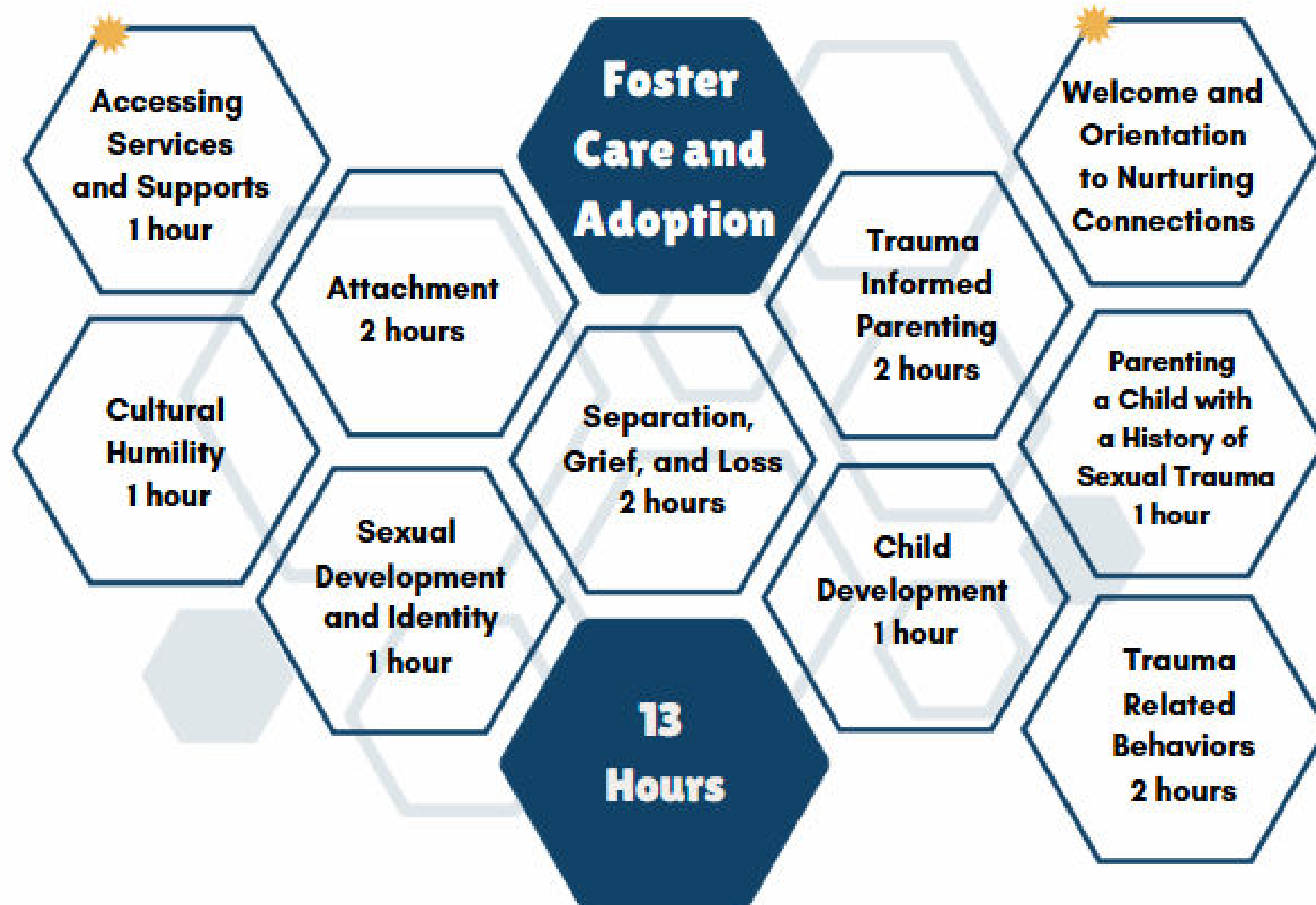
Supporting American Indian Children-Honoring the Past, Empowering the Future
1 hour

The Impact of Congregate Care Settings
.5 hours

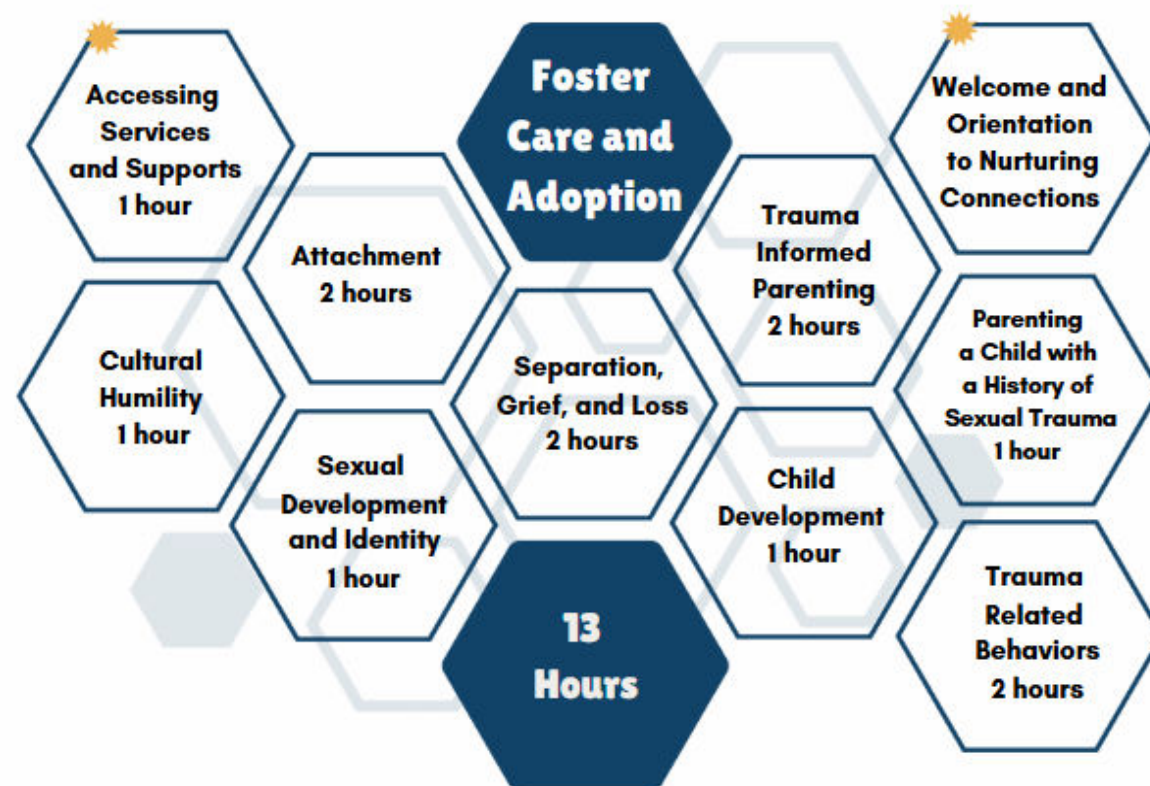
Preparing for and Managing Intrusive Questions
1 hour

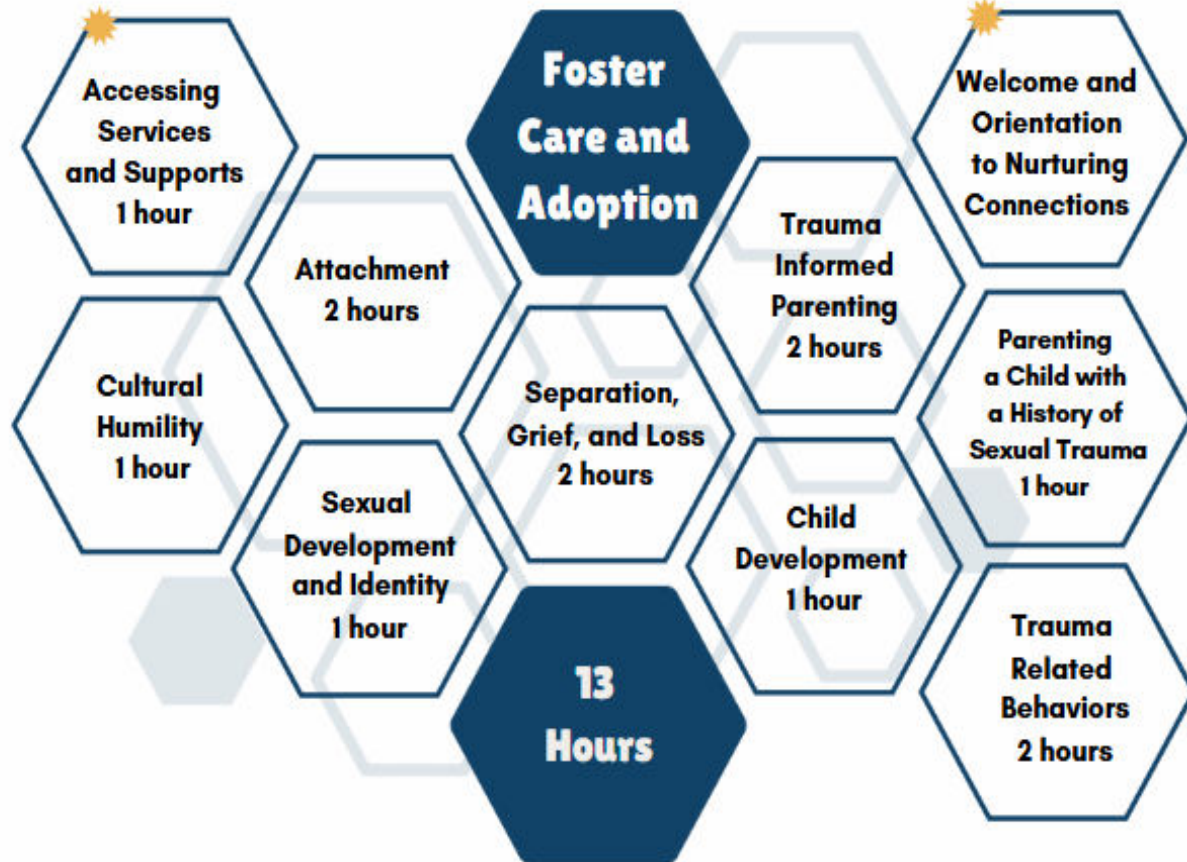
Preparing for and Managing Visitations
1 hour

Responding to Children in Crisis
1 hour



FOSTER CARE REQUIRED





Adoption Required Themes

Adoption Only

Answering
Legal
Questions about
Public Adoption
0.5 hours

Family
Dynamics
1 hour

Common
Feelings
Associated
with Being
Adopted
1 hour

Education
1 hour

The Impact
of Congregate
Care Settings
0.5 hour

Life Story:
Birth and
Adoption Story
1 hour

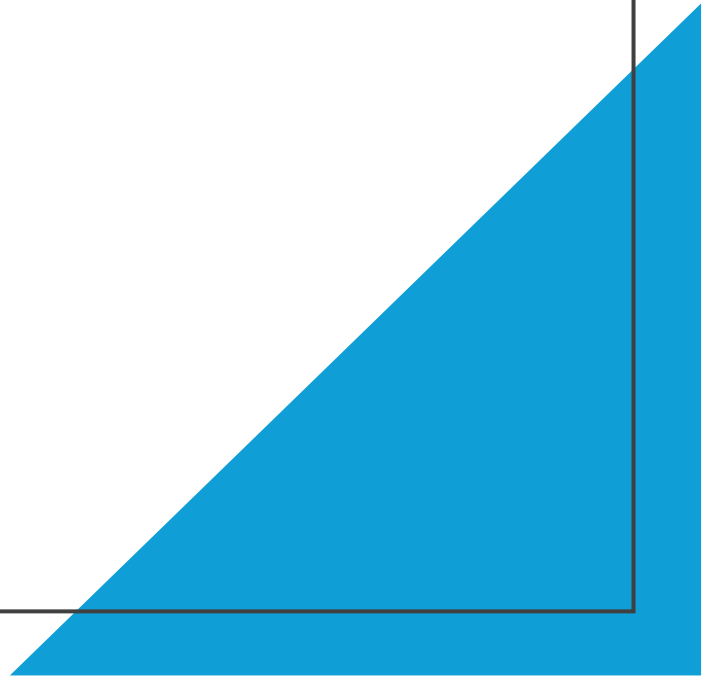
Connection
with
Birth Families
after Adoption
1 hour

6
Hours



What to Expect

- Delivery
- Registration
- Training of Trainers



TRANSITION PLANNING

- August launch
 - Full roll out by end of September
- Families should complete current curriculum before the end of August
 - Numerous offerings between now and end of August
 - After August families will have to finish with cross walked Nurturing Connections themes
- Flyers, cross walks and other resources are available

