



ONGOING VIRTUAL SUPPORT GROUPS

Date and times of groups are subject to change. Check the calendar of events on the Wisconsin Family Connections Center website for the most accurate schedule for each group. Registration is required to attend.

COFFEE TALK

A relaxed chat with other Wisconsin adoptive, foster, kinship, and/or guardianship parents to connect and feel supported. This group meets on the first Thursday of the month at 10:00 AM.



BIRTH PARENT SUPPORT

Open to any birth parents who have had a child placed for adoption, no matter what type of adoption or agency involved. This group meets on the second Tuesday of odd months at 6:30 PM.



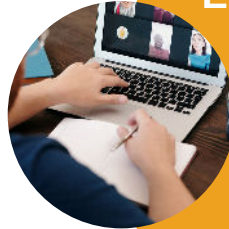
ADULT ADOPTEES

This group is open to adult adoptees. Topics alternate between open discussion and structured facilitated discussion. This group meets on the second Wednesday of each month at 7:00 PM.



EDUCATIONAL SUPPORT

A structured educational support group open to Wisconsin adoptive, foster, kinship, pre-adoptive, and/or guardianship parents. This group meets on the third Thursday of the month at noon.



REUNIFIED PARENTS

Designed for parents who have recently reunified, or are in the process of reunifying (transitioning to reunification within the next month). This group meets monthly on the first Wednesday at 6:30 PM.



OPEN MIC TEEN SUPPORT

Designed for teens in foster, adoptive, kinship, and/or guardianship families to socially connect and discuss topics related to family dynamics. This group meets on the second Tuesday of the month at 7:00 PM.



TRAUMA INFORMED PARENTING

Designed for Wisconsin foster, adoptive, kinship, and guardianship caregivers with a high level of need due to complex trauma histories. This group meets on the third Monday of each month at noon.



KINNECT RELATIVE CAREGIVERS OF CHILDREN

Designed for grandparents, uncles/aunts, siblings, or other relatives acting as the primary caregiver for children. This group meets on the last Thursday of every month at 11:00 AM.

